

DAVID YURMAN

SOHO | 114 PRINCE STREET, NEW YORK, NY 10012

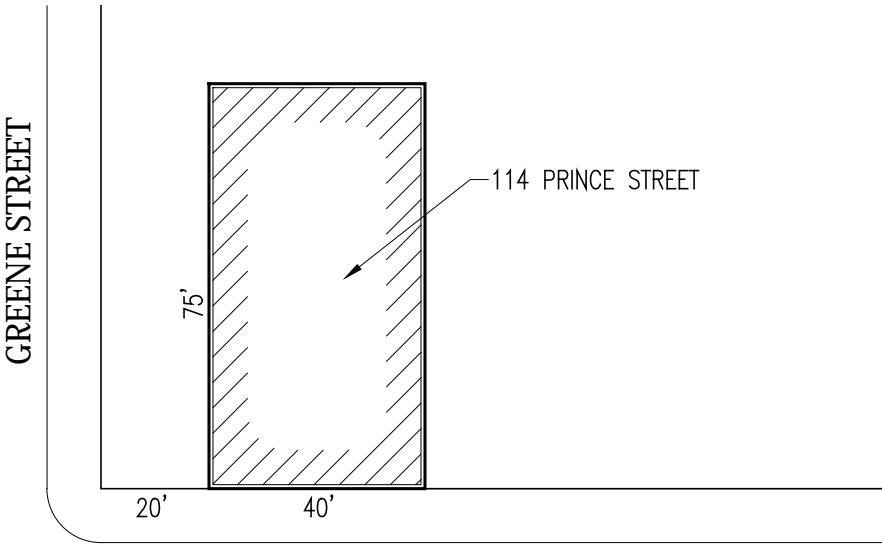
STOREFRONT ENHANCEMENT

NEW DOORS, NEW WINDOWS, NEW DISPLAY VITRINES, NEW PAINT ON HISTORIC CAST IRON FACADE

CURRENT BUILDING PHOTOGRAPH



PLOT PLAN



BLOCK: 500
 LOT: 19
 ZONE: M1-5A
 MAP: 12C
 OCCUPANCY CLASSIFICATION: MERCANTILE
 CONSTRUCTION CLASS: CLASS 3
 HEIGHT: 5 FLOORS (93'-2")

BUILDING OCCUPIES ENTIRE LOT (5 STORIES) - NO SETBACKS

VICINITY MAP

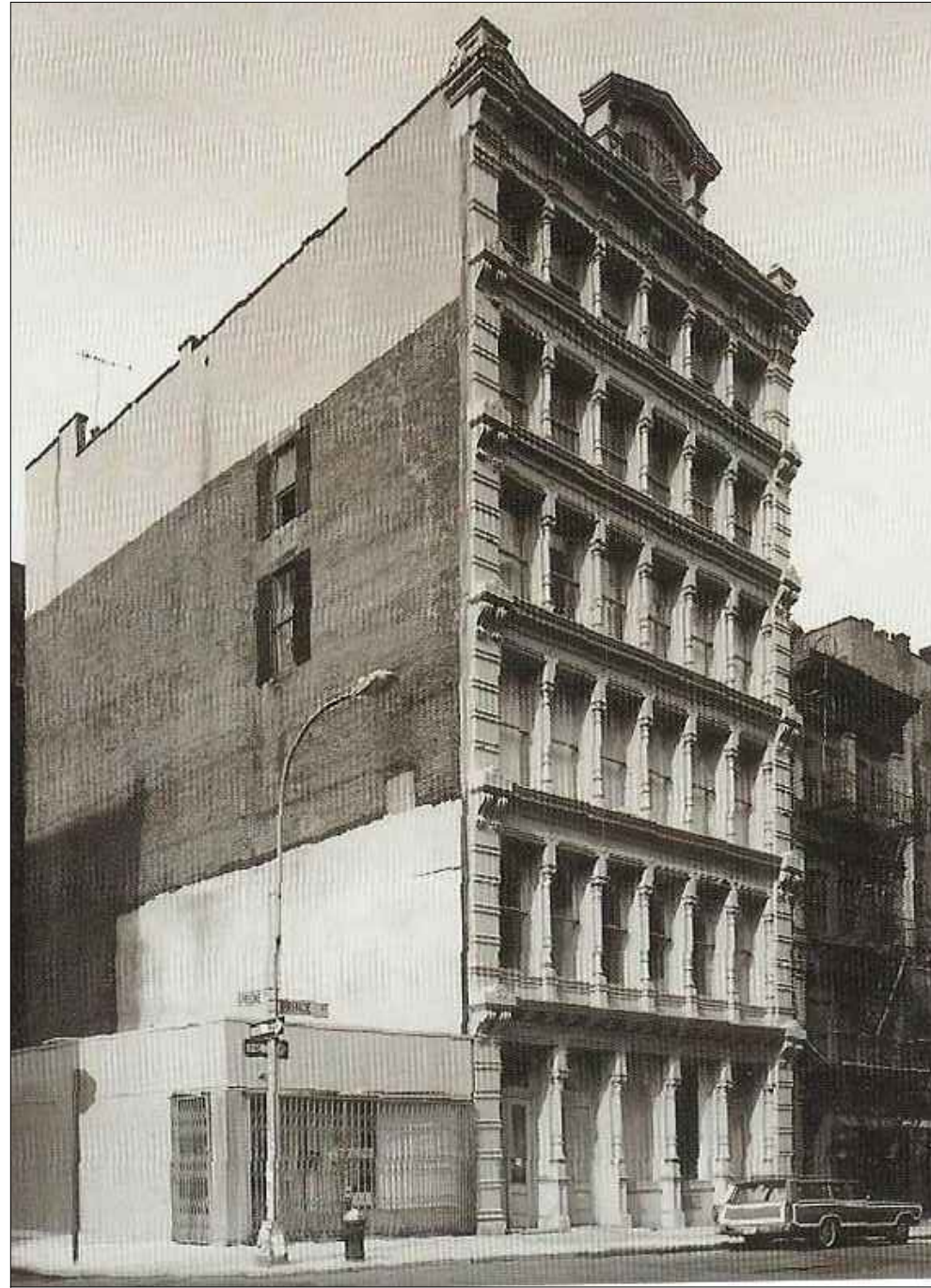


AERIAL VIEW





1940 Tax Photo



Pre-1975, Pre-mural



Circa 1975



1

EXISTING STOREFRONT FACADE

SCALE: NTS

SCOPE OF WORK:

- NEW DOORS TO MATCH EXISTING
- NEW WINDOWS WITH LOWERED SILL AND NEW METAL INFILL PANEL BELOW
- NEW DISPLAY VITRINES
- NEW PAINT COLOR ON HISTORIC CAST IRON FACADE
- REPLACE FIRE HYDRANT WITH BRASS FIRE HYDRANT



2

PROPOSED STOREFRONT FACADE

SCALE: NTS



1 EXISTING STOREFRONT ELEVATION
SCALE: 3/16" = 1'-0"



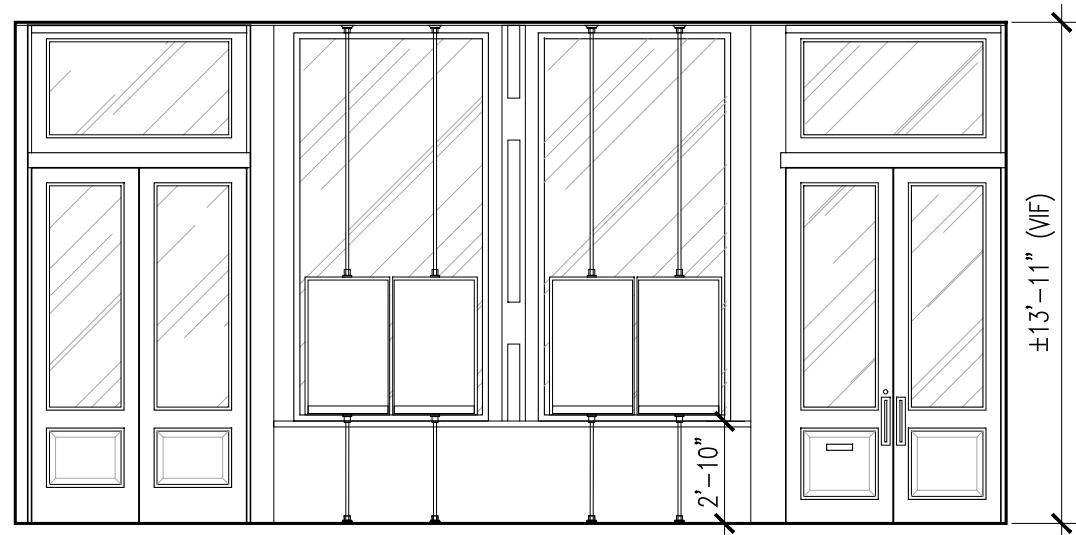
1" VINYL LOGO FURNISHED AND
INSTALLED BY OWNER'S SIGN VENDOR
REPLACE EXISTING DOORS

RELOCATED EXISTING METER-
READER AND FIRE ALARM BELL
REPLACE EXISTING HYDRANT WITH
NEW BRASS FINISHED HYDRANT

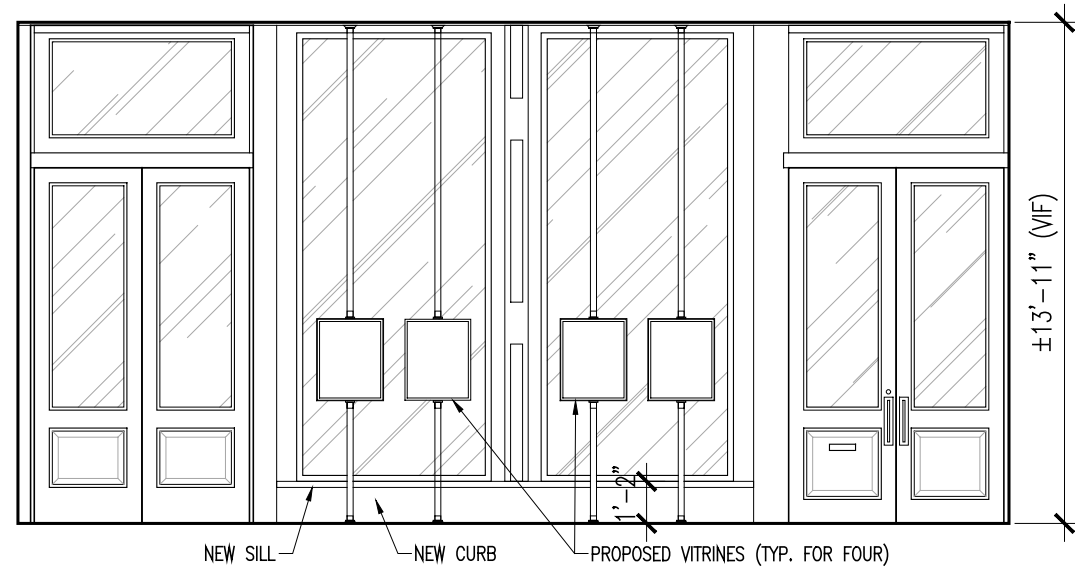
PAINT BULKHEAD PANTONE #433U;
REFER TO PAINTING NOTES FOR MORE
INFORMATION

REPLACE
EXISTING DOORS

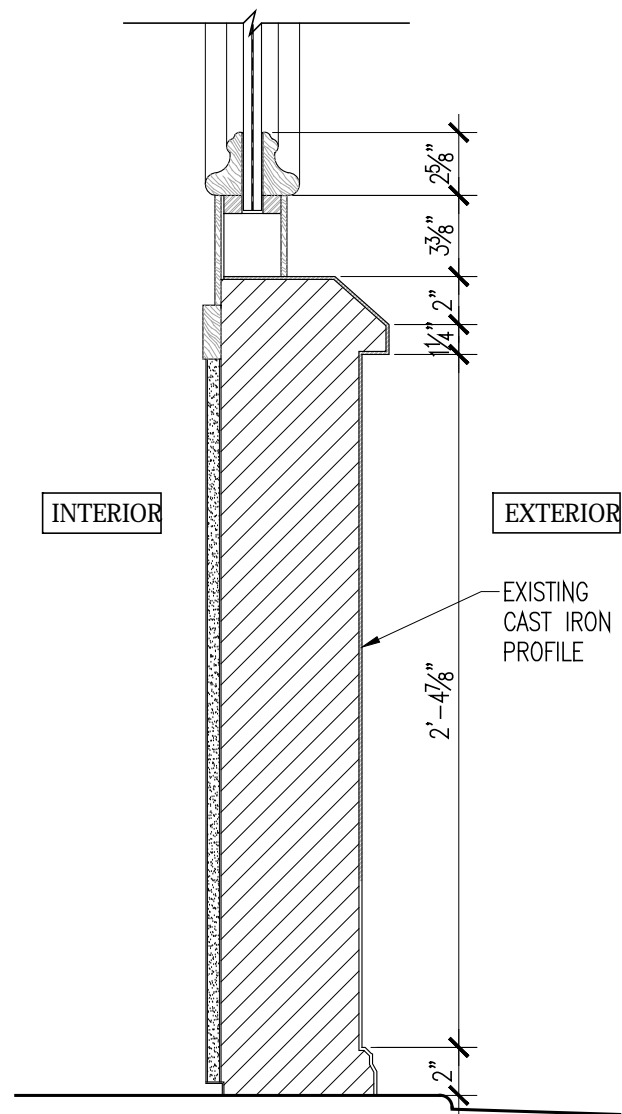
2 PROPOSED STOREFRONT ELEVATION
SCALE: 3/16" = 1'-0"



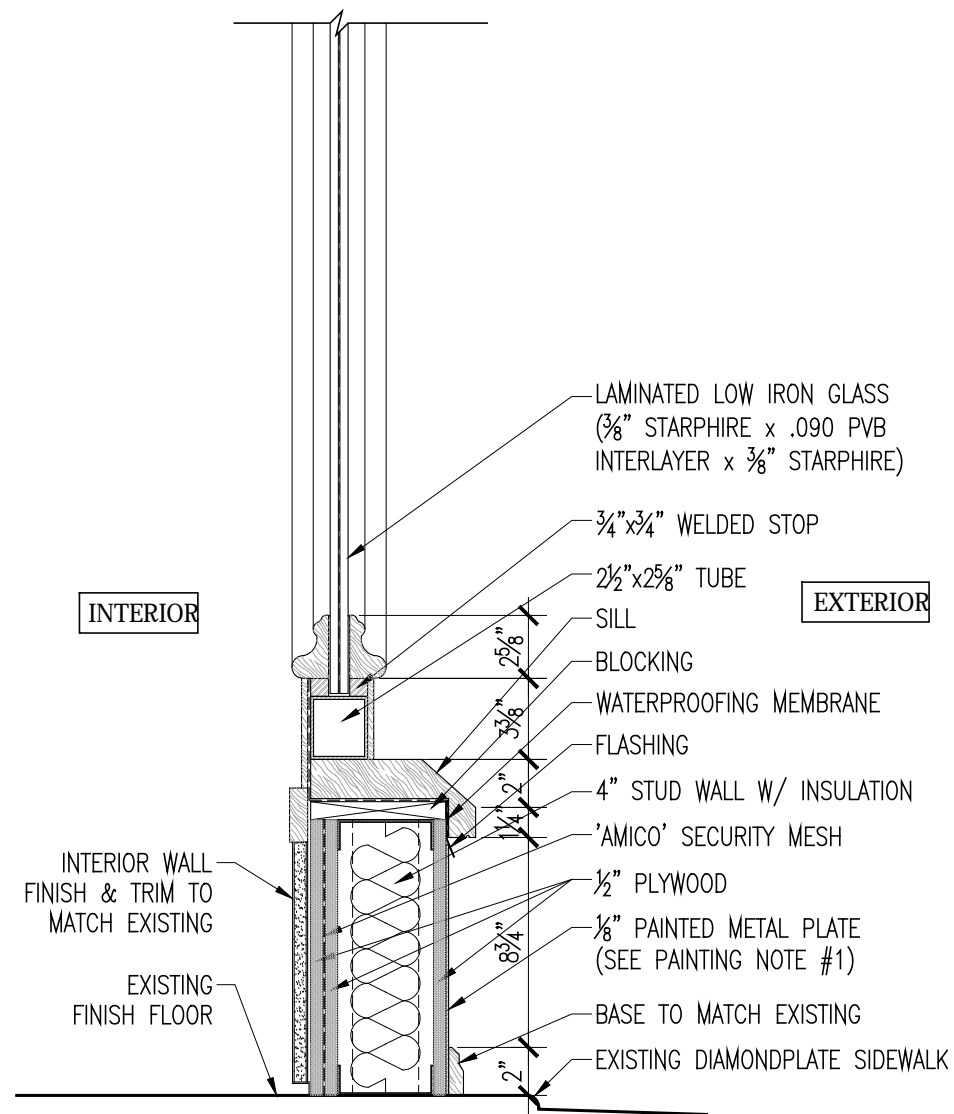
1 EXISTING INTERIOR STOREFRONT ELEVATION
SCALE: 3/16" = 1'-0"



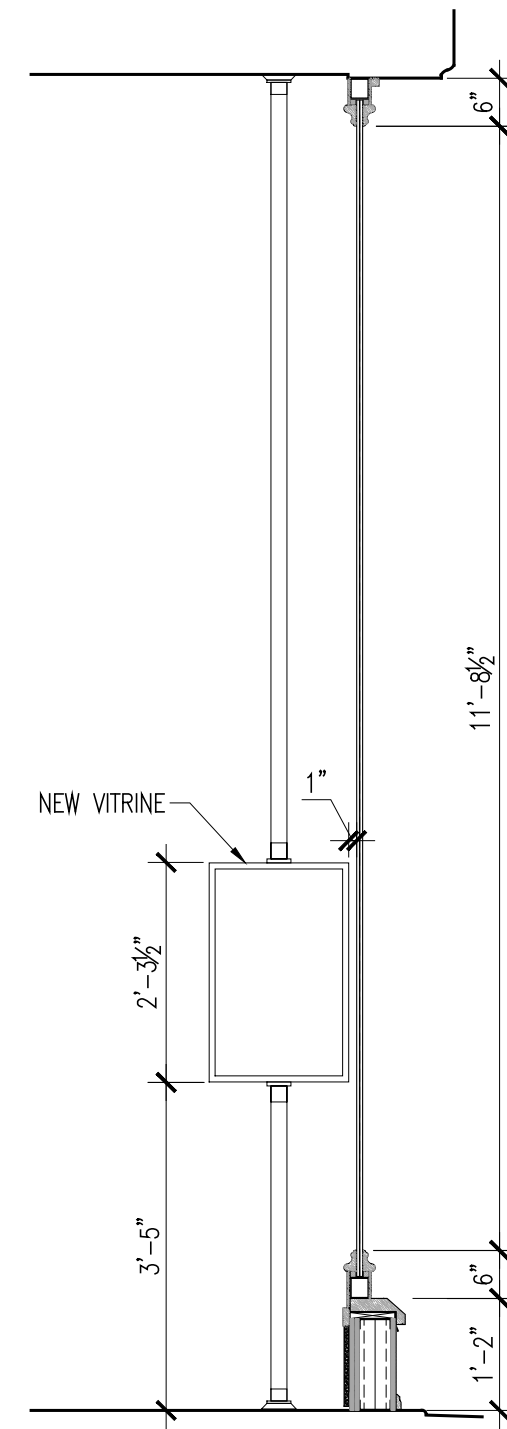
2 PROPOSED INTERIOR STOREFRONT ELEVATION
SCALE: 3/16" = 1'-0"



1 EXISTING STOREFRONT DETAIL
SCALE: 1/4" = 1'-0"



2 PROPOSED STOREFRONT DETAIL
SCALE: 1/4" = 1'-0"



3 PROPOSED STOREFRONT SECTION
SCALE: 1/2" = 1'-0"



143 Prince St. - Coach

Contemporary Metal infill panel adjacent to cast iron column



106 Prince St. - Shinola Detroit

Contemporary Metal infill panel adjacent to cast iron column



125 Prince St. - Lululemon

Wood infill panel adjacent to cast iron column



97 Greene St. - Tiffany's

Aesthetically matching wood panel adjacent to cast iron columns with same paint color

